



# Sensor Adhesion Guide



FreeStyle Libre 2 sensor



FreeStyle Libre 3 Plus sensor

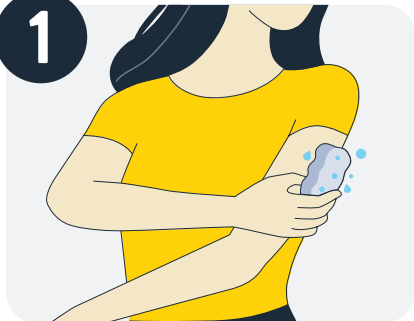


**Abbott**

# Sensor Adhesion Guide

Getting the most out of your wear time is as easy as 1, 2, 3:

1



## Wash

The back of the upper arm is the recommended and approved application site.

Use non-moisturising, fragrance-free soap to wash the application site and remove any oils or residue.

2



## Prep

After washing, use an alcohol wipe to disinfect the site.

3



## Dry

Allow the skin to fully air dry (do not blow on it).

This may require a little time, depending on the temperature and humidity of your environment.



### PRO TIPS:

- Do not use body lotion or cream where you'll apply the sensor, as they may leave an oily residue on your skin.
- Body hair can interfere with sensor adhesion. Shave the application site if necessary.

# Tips to keep your sensor secure

Your sensor is designed to withstand the demands of everyday life. However, keeping a few things in mind can maximise wear time:



**Carefully pat dry after showering or swimming** to avoid snagging the sensor on a towel.



**Choose loose clothing and take your time getting dressed** so your sensor doesn't get caught or pulled.



**Resist the urge to play with your sensor** and keep it away from curious hands, young and old alike.



**Watch out for everyday obstacles** like doorways, car doors, seat belts, and furniture edges.



## **ATHLETE OR HEAVY EXERCISER?**

Consider adding one of the extra adhesives on the following page and choose a site on the back of your upper arm that's least likely for the sensor to get knocked off.

# Want extra stickiness?

The products below may increase your sensor's staying power.\* Check with your health care provider to see if they're right for you.

## Torbot Skin Tac

A hypo-allergenic and latex-free "tacky" skin wipe

## Skin-Prep Protective

An alcohol-free wipe that helps tape and films adhere to skin

## Adhesive overbandages<sup>#</sup>

Rocadex™, Hypafix™, Coban™, Fixomull™, Mefix™

## Mastisol Liquid Adhesive

A clear, non-irritating liquid adhesive that secures dressings

## Over-bandage

You may use medical-grade bandages or tape<sup>†</sup> for extra security, but it must be applied at the time of sensor application and only removed when sensor wear is complete, since the sensor may come loose when peeling it off. Be sure to leave the opening/hole in the center of the sensor uncovered so it can breathe.

## IMPORTANT:

Strong sensor adhesion starts with correct application. Scan the QR code to watch a short video on how to correctly prepare and apply your sensor:



**0800 106 100**

FreeStyle Libre Customer Care

**FreeStyleLibre.co.nz**

The FreeStyle Libre 2 CGM System is indicated for measuring interstitial fluid glucose levels in people (aged 4 and older) with insulin-dependent diabetes. Always read the instructions for use. The system must not be used with automated insulin dosing (AID) systems, including closed-loop and insulin suspend systems. The sensor must be removed prior to Magnetic Resonance Imaging (MRI). The FreeStyle Libre 3 Plus CGM System is indicated for measuring interstitial fluid glucose levels in people (aged 2+) with diabetes mellitus. Always read the instructions for use. The sensor must be removed prior to Magnetic Resonance Imaging (MRI).

\*This list is not comprehensive and does not constitute an endorsement of the manufacturer or the product quality. Abbott Diabetes Care is not responsible for the completeness or accuracy of product information. Product availability may vary by country and region. The manufacturer's instructions for use of each product should be followed. <sup>#</sup>Check the sensor adhesion daily and if it is lifting, apply a medical grade adhesive, bandage or tape according to the manufacturer's instructions. Make sure the opening / hole in the centre of the sensor is not covered. Abbott Diabetes Care is not affiliated with the manufacturers of the products listed. Reference to third-party products does not constitute or imply an endorsement, recommendation, sponsorship or favouring of any product or manufacturer. Abbott Diabetes Care is not responsible for the completeness or accuracy of any information regarding third-party products. Abbott Diabetes Care makes no representations, expressed or implied, regarding third-party products or their manufacturers, quality or suitability for you. Manufacturer's instructions for use of each product should be followed. <sup>†</sup>Additional medical grade bandages/tape can be applied, but do not remove bandages/tape once applied until sensor is ready for removal.

The sensor housing, FreeStyle, Libre, and related brand marks are marks of Abbott. Information contained herein is for distribution outside of the USA only. For more information call Customer Service on 0800 106 100. MediRay New Zealand, 53-55 Paul Matthews Road, Albany, Auckland 0632 www.mediray.co.nz NZBN 9429041039915. ADC-92201 V1.0